

## Upcoming Events

Winter 2013

- January 11th – 2014 Board Training
- January 16th – HH Event - Location TBD
- February 20th - Student Event - Speed Mentoring
- March 20th - Hard Hat Tour / Happy Hour



**CURREY & COMPANY**  
contract@curreyco.com • www.curreyandcompany.com



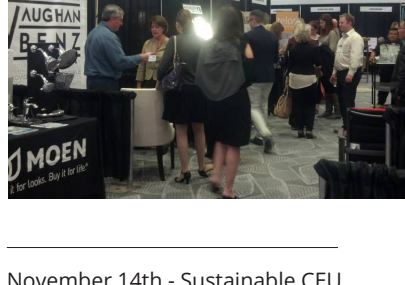
**Potawatomi Bingo Casino New Hotel**  
Milwaukee, Wisconsin  
Opening Summer 2014!

CUNINGHAM GROUP ARCHITECTURE, INC.  
**www.cuningham.com**

## Recent Events

Summer 2013

October 3rd - 11-6pm - NEWH Regional Tradeshow - Radisson Blu, Minneapolis, MN



November 14th - Sustainable CEU Presentation - HGA, Minneapolis, MN



December 19th - 5-7pm - Holiday Happy Hour Borough Restaurant - Parlour Room, Minneapolis, MN



## State of the Chapter

And now, a word from the President....

Happy Holidays from NEWH North Central,

I would just like to say a huge thank you to all our Sponsors over the 2013 year. We just could not have done the events that we had without your continued contributions and support, so thank you we truly appreciate you and what you do for our chapter. Also thank you to the 2013 Board of Directors for all your hard work and devoted time towards making this last year such a success. I think that we stepped it up a notch, and I am excited to reveal the new calendar of events for 2014.

- January 11th – 2014 Board Training
- January 16th – HH Event
- February 20th - Student Event - Speed Mentoring
- March 20th - Hard Hat Tour / Happy Hour
- April 17th - Membership Drive - Bowling
- May 22nd - Student Event - Portfolio Event
- June 19th - Happy Hour and Community Service
- August 18th - Fundraiser and Design Competition - Brits Pub
- September 18th - CEU Blitz
- October 16th – Discussion Panel/ Outreach Event
- December 18th - Happy Hour/ Community Service Event

I know with the help of the 2014 NEWH North Central Board we are going to have a great time networking, but we have some great tours and educational programs set up for the year as well. Look for those reminder save the dates and invites coming soon to your email boxes.

Congratulations to our 2013 Student member Scholarship winners Anthony Woshley - Architecture, NDSU; Fuji Vang – Culinary Arts, Le Cordon Bleu; and Ashley Ochiagha – Interior Design, UofM. NEWH North Central was able to give three \$1,500 scholarship to students who are interested in a career in hospitality for 2013, we hope to do even better in the future.

It has been a great year and I don't know how we are going to top it in 2014, but I am confident that we will because of you our great members, sponsors, and board.

Warm Wishes,  
Stephanie Thompson  
NEWH North Central President

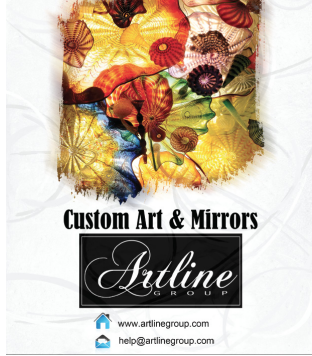


## What's New?

Check out what's new around town!

Stop in & enjoy some of the many fine establishments in and around the Twin Cities. Here's a list of some of the newest additions to our architectural landscape and help support our local businesses!

- Whole Foods Minneapolis [www.wholefoods.com](http://www.wholefoods.com)
- Burch Steak & Pizza Bar [www.burchrestaurant.com](http://www.burchrestaurant.com)
- Eat Street Buddha Kitchen [www.eatstreetbuddha.com](http://www.eatstreetbuddha.com)
- Groundswell [www.groundswellmn.com](http://www.groundswellmn.com)
- Lake & Irving [www.lakeandirving.com](http://www.lakeandirving.com)
- Mason's Restaurant & Barre [www.masonsmn.com](http://www.masonsmn.com)
- Royal Bangkok [www.royalbangkokstpaul.com](http://www.royalbangkokstpaul.com)
- Seventh Street Social [www.seventhstreetsocial.com](http://www.seventhstreetsocial.com)
- The Tangiers [www.thetangiersmpls.com](http://www.thetangiersmpls.com)
- Tequearepa [www.tequearepa.com](http://www.tequearepa.com)
- Vitali's Bistro [www.vitalisbistro.com](http://www.vitalisbistro.com)
- Vo's Vietnamese [www.vosvietnamese.com](http://www.vosvietnamese.com)



## Green Corner

This Quarter's Topic: Kinetex

KINETEX: BUILT AROUND SUSTAINABILITY

What is it?

Kinetex® is an advanced textile composite flooring that combines key attributes of soft-surface floor covering with the long-wearing performance characteristics of hard-surface flooring - See more at: <http://www.jj-kinetex.com>

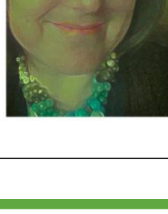
Kinetex contains more than 50% post-consumer recycled content and 16% of the total weight is made from recycled PET commonly sourced from plastic beverage containers.

1 box of Kinetex (18 tiles or 72 sq. ft) contains the equivalent of 144 10oz bottles.

## Announcements

Karena Monahan

Look who has a new job! She is now a Lighting Consultant at Creative Lighting.



**WE'LL HELP YOU MAKE A FEW MORE RIPPLES IN THE POND.**



**Jg.B**  
john g. bagley

1817 Southwood Trail,  
St. Cloud MN 56301  
TF: 855.526.6872  
FX: 206.686.9889  
Cell: 612.281.4700  
[jgbagley@contractresource.net](mailto:jgbagley@contractresource.net)

## Thank you!

A BIG thank you to our North Central Sponsors

## Annual Sponsors

gold sponsors



silver sponsors

