

A letter from our Chairperson

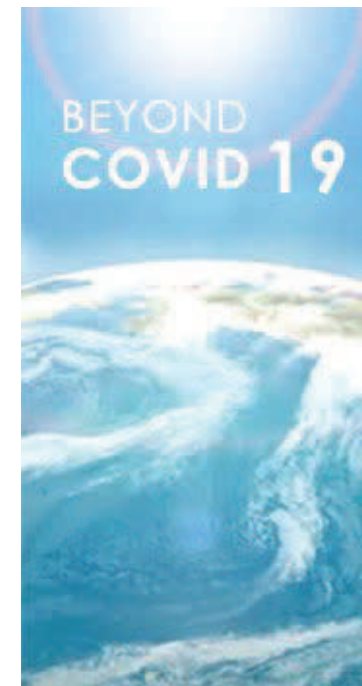
As we journey together through these uncertain times, we wanted to take a moment to connect with all of our members. Our team is very dedicated to providing you with quality programming and networking opportunities while we all navigate this difficult time together. While we may not be able to connect face to face we hope that this newsletter and our future programming can be an opportunity for everyone in the Orange County Regional group to connect virtually and stay on the pulse of what is happening in our industry. Should you have something you would like to contribute or any feedback please do not hesitate to reach out to myself or anyone on our board.

I would like to thank our very dedicated NEWH Orange County Regional group board for all of their hard work, and we look forward to connecting with everyone throughout the remainder of 2020!

Thank you,

Jessica Wasmer Northover

Chairperson



A NEW ERA FOR NETWORKING



These are unprecedented times that we are experiencing. Now more than ever we have a strong need to connect and feel a sense of community. That is exactly what our NEWH founding members first created in Los Angeles back in 1985. Our world is changing day by day and many in our hospitality industry are faced with personal and professional challenges. We want our membership to know that we are here to support you and offer that sense of community that we all crave.

We are excited to kick off our newsletter to keep you informed about all of the new virtual events we will be offering! In addition to our newsletter, we will post upcoming virtual events on our website. We look forward to offering panel discussions with hotel owners and designers, CEU's for those of you who would like to earn credits in addition to taking advantage of this time to learn and stay informed on design trends in our industry. We are also looking to offer a virtual hotel tour and hopefully a model room tour. This will be an excellent opportunity to learn about the process behind the making of a model room.

Our Steering Committee recently held its first Zoom board meeting. It was great to 'see' each other. There was a real sense of comradery and we generated several great ideas and enthusiasm that we want to bring to our members. So in the spirit of networking, we look forward to connecting with you and seeing you at our next virtual meeting!

~ Linda Hinojosa, Membership Director

NEW MEMBERS We want to extend a warm welcome to our newest NEWH OC Region Members!

Amy Edgecombe
Strategic Furniture Group

Michelle Hnatyk
Cambria

STEERING COMMITTEE

Chairperson

Jessica Wasmer-Northover
jessica.w@fabricinnovations.com

Chair-Elect

Jennifer Dorr
jenniferd@shademakerusa.com

Executive Advisor

Christine Wasmer
Wasmer@outlook.com

Secretary

Sheri Black-Flynn
SBlack@mdcwall.com

Scholarship Director

Sonya Miles
Sonya@mlhdesigngroup.com

Programming Director

Jane Jones
jjones@silverstatetextiles.com

Membership Director

Linda Hinojosa
Linda.Hinojosa@formica.com

Playa Mesa Mixer



Todd Hatch and Kristin Till of Hatch Design came out to Playa Mesa Restaurant in Costa Mesa to answer member questions regarding the restaurant industry. We discussed the latest trends, the design process, design challenges and how a vendor can best support a design firm. Thanks to all who attended and a special thanks to Hatch Design!

We want to stay connected with all of you and bring some fun events to our OC Chapter! We will connect virtually for now so please watch for our e-mail blasts regarding upcoming CEU's, hotel tours, and panel discussions! All events will also be listed on the NEWH website!

- Jane Jones, Programming Director

MDC

Wellness Works:

How Harnessing the Power of Indoor Environmental Quality (IEQ) Enhances the Occupant Experience



FREE CEU EVENT

Wednesday April 29th 12pm - 1pm PDT

Wellbeing is a hot topic today because we spend most of our time indoors, in enclosed workspaces, in more sedentary activities. What happens in the built environment is critical to creating a healthy experience for employees, patients, students, and guests.

This CEU will seek to educate specifiers on how to use Indoor Environmental Quality (IEQ) to promote wellness by reducing stress, increasing productivity, and improving the overall occupant experience.

TO RSVP:

Email Sheri Black-Flynn

SBlack@mdcwall.com

Earn 1 credit for AIA and IDCEC

SCHOLARSHIP WINNERS 2019

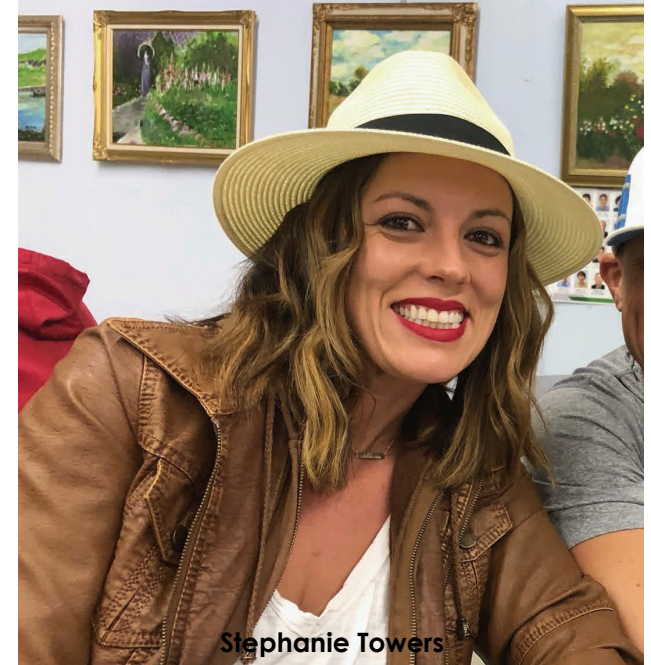


On the evening of December 2, 2019, the OC Regional Chapter held its annual scholarship awards dinner at the Kimpton Shorebreak Hotel in Huntington Beach CA. This year we were excited to be able to award two students with their own \$4000 scholarship. In addition, winners also receive a complimentary year of NEWH membership. It was a lively social event including a significant donation to the Toys-for-Tots foundation as several guests brought unwrapped gifts for boys and girls.

Anyone interested in donating to our chapter scholarship fund may do so directly online at <https://newh.org/donate-chapter-scholarship-fund/>

~Sonya Miles, Scholarship Director

STEPHANIE TOWERS, from Saddleback College and winner of the Boutique Design West Scholarship majored in Interior Design and graduates this spring. Stephanie has been learning the inner workings of restaurants for many years and wants to use her operational knowledge to create well-organized and highly efficient designs that wow guests through creativity while also benefiting both the front and back of house with smoother operations. Her many extra-curricular activities include but are not limited to: President of the Design Club, Phi Theta Kappa Honor Society, and volunteering at a women's recovery



Stephanie Towers



Elizabeth Hayes

ELIZABETH HAYES, from San Diego State University and winner of the NEWH Orange County Regional Scholarship majored in Hospitality & Tourism Management and graduated at the end of 2019. To supplement her studies, Elizabeth has sought out opportunities to further her knowledge through practical job experience. This led to internships at places like the Disneyland Resort, Hilton Waikoloa Village in Hawaii, Embassy Suites in Washington DC, and PRA Event Management in San Diego. She has also held several student board and leadership positions within the Hospitality school at SDSU. She landed her dream job at graduation and is now working in Event Management at the Marriott Marquis hotel in New York's Time Square.

OUR SPONSORS

We would like to send a huge thank you to our sponsors for their support. Your involvement makes it possible for our chapter to thrive.



2020 CORPORATE PARTNERS

BENEFACTOR: DURKAN | FABRICUT CONTRACT | RH CONTRACT | SIGNATURE | ULSTER **PATRON:** BERNHARDT HOSPITALITY | BOUTIQUE DESIGN | BRINTONS | DELTA | HOSPITALITY DESIGN | ISG | MILLIKEN | MOEN | P/KAUFMANN | VALLEY FORGE FABRICS **SUPPORTING:** AMERICAN ATELIER | ATERIDRS CONTRACT | ARTLINE GROUP | ASHLEY LIGHTING | ATLAS MASLAND | CRYPTON | DOWN ETC. | ENCORE HOSPITALITY CARPET | FABRIC INNOVATIONS | FAIRMONT DESIGNS | KIMBALL HOSPITALITY | LILY JACK | MANDY LI | PORDELANOSA | RICHLOOM CONTRACT | SEMFIM | SERTA BEAUTYREST | SEURA | SHAW CONTRACT HOSPITALITY | SHELBY WILLIAMS | SUMMER CLASSICS CONTRACT | TARKETT | TROPITONE | VAUGHN BENZ | WALTERS