



sustainability chair

clifford tuttle, asid
forrestperkins, llc

project directors

sharry cooper, iida
architectural alliance

jeanne varney
host hotels & resorts

christine wasmer
wasmer contract group

durette candito
durette dandito design

sustainability team

william gregory
milliken & company

deborah herman-romano
virginia quilting/fabin

david mahood
olive designs

priscilla nesbitt
best western international

lynda sullivan
sullivan hospitality marketing

sustainability adviser

jillian van dresser
the van dresser company

INITIATIVES

forums:

- positioning hospitality
- sustainable leadership

resources:

- sustainable hospitality directory

education:

- industry ceu programs

scholarship:

- sustainable design competition

NEWH Sustainable Hospitality Design Competition 2007-2008

Dear Students and Educators:

NEWH is proud to host the second annual Sustainable Design Competition. The NEWH Sustainable Design Competition will provide students with the opportunity to showcase their design skills while utilizing the very best in sustainable design products and practices. JLF/ lone meadow and Designtex have generously donated the awards - one to the winning student and one to the student's design program.

AWARD:

\$5000 JLF/lone meadow Scholarship Award to the Student

\$5000 Designtex award will go to the Interior Program the winning student attends

The student award will be distributed to the student through the respective school. Student monies may be used for tuition, books or supplies needed for his/her education. The award to the school must go to the INTERIORS PROGRAM and not to the general funds of the school. The program may utilize this award to enhance the educational needs of the students i.e., purchase of computers or software for the design program, purchase of materials to help the design studio.

Our winning student and school shall be honored at HD Expo 2008. In addition to NEWH Magazine, the event shall be covered by other hospitality and design publications.

Description of competition:

- Open to ALL interior design students (sophomore level and above) attending an accredited program. All student intent applications must be signed by the school advisor, dean or program director.
- Students must execute a dynamic, creative, cutting edge design utilizing the very best products and technologies which encompass sustainable products/materials and construction practices. In addition to the physical aspects of design, the functional day to-day use of the space in a "green" sense should be considered as the design of a space can encourage recycling and reuse by the occupant.
- Project will involve the design of a resort-timeshare. Students may choose between: renovating a resort-timeshare plan as offered by this competition or utilizing the same square footage; or, executing a completely new resort-timeshare concept. (Students may locate their timeshare project in a destination of their choice.) Students should take into consideration:
 - Orientation of unit/building and its connection to the outdoors, i.e., outside light/window treatments, heat generation into space (efficient use of energy)
 - Description of materials and construction (concrete, steel, etc...)
 - Water-use – efficiency of plumbing, fixtures, etc...
 - Air quality as related to material and furniture selections
 - Energy efficiency as related to lighting/heating/cooling of space
 - Suggest that interior material and furniture specifications to meet USGBC guidelines
 - Recycling, re-use as it relates to living in the space
- All work must be student's original work. Only one entry allowed per student.
- Students are expected and encouraged to research sustainable products/practices. NEWH offers a Sustainable Resources Directory online which may be utilized by the student for location of sustainable resources, manufacturers and others involved in the production and design of sustainable products.



NEWH
The Hospitality Industry Network

sustainable hospitality

- Submissions and application materials shall be retained by NEWH and will not be returned to the applicant. Students retain copyright to their documents and design, but must agree to grant perpetual royalty free license to NEWH, Inc. and NEWH Sustainable Hospitality to use their entry either partially or in its entirety in future NEWH, Inc. marketing materials or presentations. Finalists and winning student agree to their work being shown at venues to be determined at HD EXPO 2008. Student finalists and winner who are photographed agree to sign a release allowing NEWH, Inc. and NEWH Sustainable Hospitality to use their image in marketing materials, publications or presentations.
- Finalists may be asked to submit original work if so required by the judges.

Presentation/Required submittals:

- Students must submit their project via electronic medium (jpeg, drawing or pdf files) on a CD-ROM or DVD/DVR utilizing the best format for presentation of their work. Actual work may be completely created virtually and submitted in this format or actual work may be photographed and submitted digitally.
- Students must also present a not more than 500 word essay describing their design intent and project description.
- **OPTIONAL:** Students may also film an AVR file showing a not more than 10 minute personal presentation of their work. This will allow the judges to review student's presentation skills. The presentation movie clip is not mandatory, but is encouraged.
- Complete submittal must include, but is not limited to:

Design Intent Presentation, Plans, Drawings, Specifications (all in electronic format)

- ❖ Rapid visualization/sketches of concept (actual and/or virtual)
- ❖ Floor plan/reflected ceiling plan
- ❖ Interior elevations: essential walls only, to communicate important elements of the design concept.
- ❖ Finish plans & finish schedule
- ❖ Millwork design and specifications
- ❖ FF & E (Furniture, Fixtures & Equipment) floorplan & specifications - include index of green sources
- ❖ Lighting schedule & specifications
- ❖ Art & artifacts specifications
- ❖ Design intent narrative

Optional: 3-D Model may be included (may be produced in digital format)

Optional: 10 minute video file of personal presentation and/or PowerPoint presentation of your concept.

- Students must provide 5 copies of this digital submittal. All submittals must be properly marked with student name, school and project title. All submittals are judged as to their professional appearance. All original drawings/models/presentation boards and materials must be retained for submittal if student is selected as a finalist.
- A minimum of five finalists will be selected. The winning student shall be selected from the five finalists. The work of all finalists will be displayed at HD Expo 2008.
- NEWH will not be responsible for the return of any applications, documents, or other submittals by applicants.
- Students must also include a short essay/bio about themselves along with a resume and photo/headshot suitable for use in press releases. A signed press release (included in application packet) must also be included.

Deadline:

- Please complete an "**Application of Intent**" to participate and mail or fax to the NEWH, Inc. office by **December 15, 2007**.
- All **completed project entries** will be due on February 29th, 2008.

Award Presentation: The winning student/school will be announced at HD Expo 2008 in Las Vegas.

page 2

leading the hospitality industry in promoting education, inter-cooperation, and endorsed policies for environmentally responsible practices, construction methods, materials and environments

newh, inc. ● post office box 322 ● shawano, wi 54166 ● t - 800.593.newh ● f - 800.693.newh ● www.newh.org



Typical Time Share Unit Requirements

Design must include but not be limited to:

- Kitchen to include: dish washer, sink, refrigerator, cook top and oven, storage cabinetry and all associated fixtures.
- Living and dining space – sufficient for six – eight (6 – 8) guests
- Patio/balcony area
- Closet/drawer space sufficient for six (6) guests
- Sleep spaces to accommodate six (6) guests
- Bathroom facilities and privacy
- Electrical/HVAC/hot water closet
- Desk or work space for business traveler
- Laundry room may be introduced
- Walls and room alignment may be reoriented. Please be aware of plumbing locations (plumbing stacks).
- Sleeping rooms must allow for black-out capabilities (no exterior light seepage in room).
- Material selections must be suitable for relative ease in maintenance, wear and clean ability.
- Lighting levels appropriate for multiple tasks and ambience.



NEWH
The Hospitality Industry Network

sustainable hospitality

NEWH SUSTAINABLE DESIGN COMPETITION 2007-2008 INTENT TO PARTICIPATE APPLICATION

Please return this application:

BY MAIL: NEWH, Inc. P.O. Box 322, Shawano, WI 54166
BY FAX: 800-693-NEWH
BY EMAIL: newh.scholarship@newh.org

DEADLINE: DECEMBER 15, 2007

QUESTIONS PLEASE EMAIL: newh.scholarship@newh.org or go to: www.newh.org

STUDENT NAME:

ADDRESS:

PERMANENT ADDRESS IF DIFFERENT:

PHONE/FAX/EMAIL

SCHOOL/PROGRAM

STUDENT'S MAJOR:

YEAR IN SCHOOL – sophomore/junior/senior/graduate program other:

SCHOOL ADDRESS

ADVISOR NAME/TITLE:

PHONE/FAX/EMAIL

ADVISOR'S APPROVAL SIGNATURE HERE:

I will be able to attend HD Expo in Las Vegas May of 2008 (date to be announced) for the presentation of my award if chosen as winner. (One night stay and airfare included)

I, _____ (student(s) name)
am a student at the above institution declare my intent to participate in **THE NEWH SUSTAINABLE DESIGN COMPETITION FOR 2007-2008**. I have read and understand the rules and requirements of this competition and have received approval from my program advisor to participate. I understand that the deadline for submittal of my work is February 29th, 2008.

STUDENT SIGNATURE:

DATE:



NEWH
The Hospitality Industry Network

sustainable hospitality

NEWH SUSTAINABLE DESIGN COMPETITION 2007-2008

PROJECT SUBMITTAL & RELEASE FORM

Please include this form with your project submittal.

DEADLINE: FEBRUARY 29, 2008

MAIL TO: NEWH, Inc., PO Box 322, Shawano, WI 54166
Questions please email: newh.scholarship@newh.org

DATE:

STUDENT(S) NAME:

ADDRESS:

PERMANENT ADDRESS IF DIFFERENT:

PHONE/FAX/EMAIL:

SCHOOL/PROGRAM

MAJOR:

TITLE OF SUBMITTAL IF ANY:

SUBMITTAL CHECK LIST: Please circle format used: CD-ROM DVD/DVR

*I have included **five (5) copies** each of my submittal which includes:*

- Rapid visualization/sketches of concept (actual and/or virtual)
- Design intent narrative
- Floor plan
- Reflected ceiling plan
- Essential interior elevations
- Finish plans & finish schedule
- Millwork design and specifications
- FF & E (Furniture, Fixtures & Equipment) floor plans and specifications, including Index of green sources
- Lighting schedule & specifications
- Art & artifacts specifications
- Budget
- Project description (max. 500 word essay)
- Headshot
- Resume/bio
- Optional: 3-D actual and/or virtual model
- Optional: 10 minute video file of personal and/or PowerPoint presentation of your concept

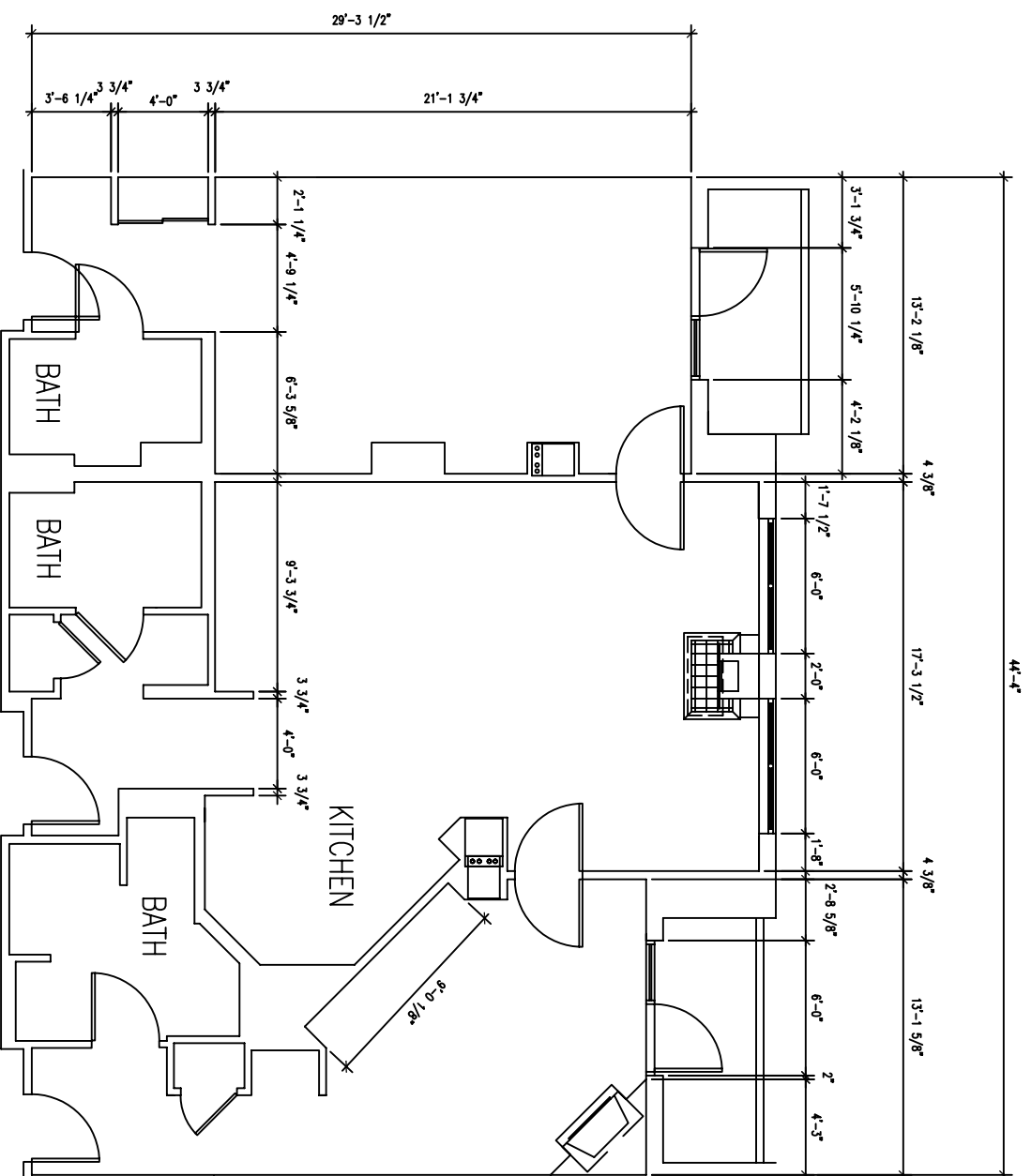
All submittals are to be clearly marked with student name/project title/school name.

I certify that this submission is my original work and that it does not infringe on the intellectual property rights of any third party. I understand that I retain the copyright in these documents and this design, but I irrevocably grant a perpetual, royalty-free license to NEWH, Inc. and NEWH Sustainable Hospitality, to use this entry, either partially or in its entirety in future marketing materials or promotions. I also release use of photographic images of myself taken in the course of this competition including my submitted headshot and biographical information.

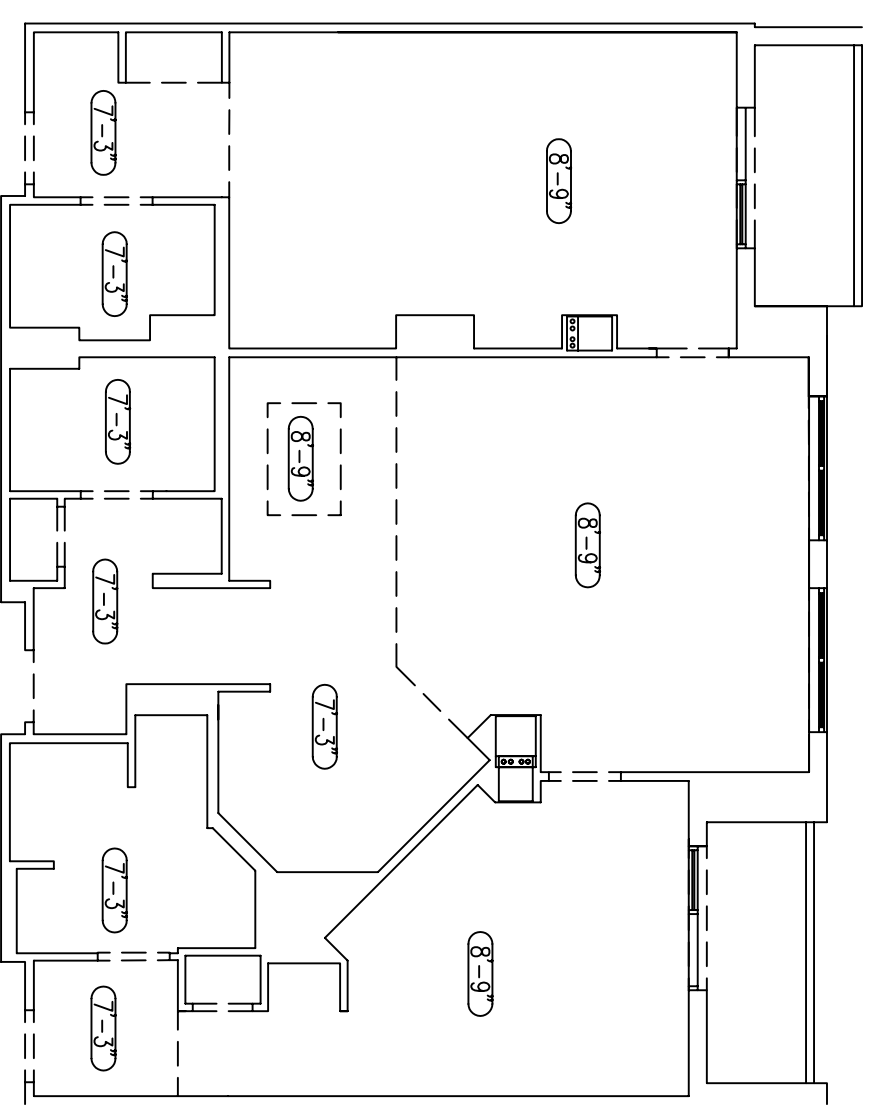
I understand that applications and electronic submittal materials will not be returned to me. I also agree to supply any part of my original work on this submittal if requested by the judging committee. Costs of shipping/insurance etc including return shipping to be borne by me. I hold NEWH, Inc. completely harmless as to the loss or damage of any submission made by me for this competition.

SIGNATURE:

DATE:



NEWH SUSTAINABLE HOSPITALITY
TIMESHARE UNIT
SCALE: $1/8" = 1'-0"$
Square Footage = 1240'



NEWH SUSTAINABLE HOSPITALITY
TIMESHARE UNIT
SCALE: $1/8" = 1'-0"$
Square Footage = 1240'

NEWH Sustainable Hospitality Design Competition 2008

This is an exciting opportunity to showcase your talent to major design professionals ... AND win a \$5,000 scholarship for yourself and a matching award for your school program! It's also a great opportunity to test your skills in designing 'GREEN'!

**Sponsored by
NEWH Sustainable Hospitality
JLF - lone meadow
Designtex**

Deadline for application of intent to participate: December 15, 2007.

Deadline for project submittal: February 29, 2008

Finalists and winning applicants projects to be featured at HD Expo 2008 in Las Vegas.

For more information contact your program advisor or go to: www.newh.org and click on Sustainable Hospitality, Scholarship Competition to download application forms and informational packet.



NEWH
The Hospitality Industry Network

sustainable hospitality